

# Replacement Universal Automatic Charger Kit (865-117-666) for Model No. JNC660 Installation Instructions

## Charger Kit Included Parts:

- (1) Charge Control Board
- (1) Charger/Transformer
- (1) Charger Mounting Bracket
- (1) LED Charging Status Label
- (2) Mounting Screws

## Tools Required:

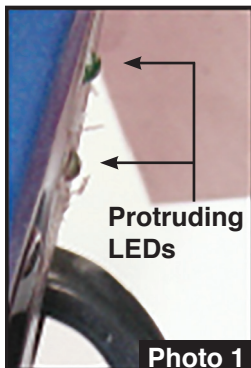
- Phillips Screwdriver
- 10mm or 5/16" Box End Wrenches or Sockets
- Wire Cutter

**WARNING: The jump starter and/or its battery are live throughout the repair process. Care must be taken not to touch clamps together or short the battery leads. Handle all wiring and components inside unit housing with care, as potential of sparking can occur if wires or components are crossed.**

1. There are three versions of the automatic charging circuit on the JNC660: (1) The original version with protruding Charge Status LEDs and Round AC Adaptor hole in Case Front (see Photo 1). (2) The later version with a flush Charge Status Label with non- protruding LEDs and Round AC Adaptor hole in Case Front (see Photo 2&3). (3) The current version, which has non protruding LEDs, and a Rectangular AC Adaptor hole in Case Front (see Photo 3). This information is relevant later in the instructions.
2. Remove the screws that join the rear case to the front case, noting that some screws are located in the cable channels on the rear case. Set rear case and all screws aside for use in reassembling unit.(see Photo 4)
3. Once rear case is removed, cut zip tie holding internal wiring together (see Photo 5).
4. Unmount Charge Control Board by removing the 2 screws holding it to the Front Case Half (see Photo 6). Set screws aside for later use.

**NOTE:** Orientation of Charger – replacement Charger will be installed in the orientation (prongs up or prongs down, depending on the location, and shape of the prong exit hole in the case front. Round exit hole, on left in Photo 3, requires prongs up, while Rectangle exit hole, on right in Photo 3, requires prongs down. Disconnect Charger Bracket by removing 2 screws holding it in place (see Photo 5) and unmount charger. Set screws aside for later use.

5. Disconnect Charger Bracket by removing 2 screws holding it in place (see Photo 7) and unmount charger. Set screws aside for later use.
6. Remove Terminal Bolts from Battery, starting with the Positive Terminal. Set bolts aside for later use. (See Photo 8).



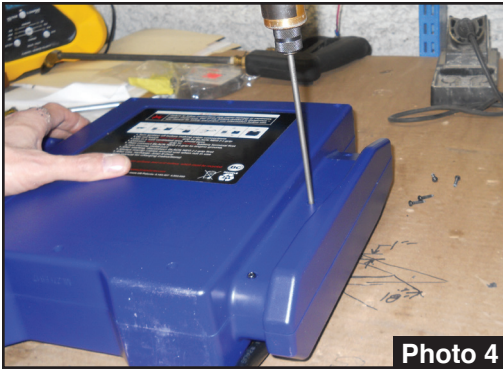


Photo 4

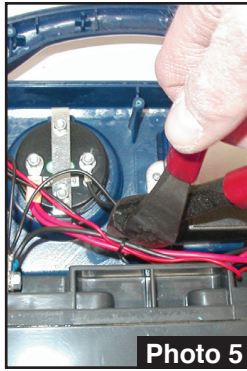


Photo 5

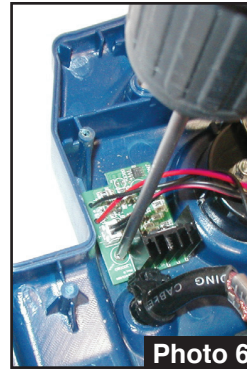


Photo 6

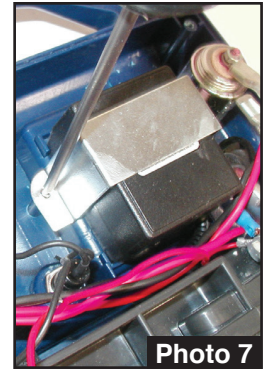


Photo 7

7. Remove old Charge Control Board Wire Leads from Battery Terminals and replace with new Charge Control Board Wire Leads, following the same color sequence as the removed leads.

8. With new Charge Control Board Wire Leads in place, reinstall Battery Terminal Bolts, and tighten until snug. Visually verify that all ring terminals are properly connected to the Battery Terminal Bolts. (see Photo 8)

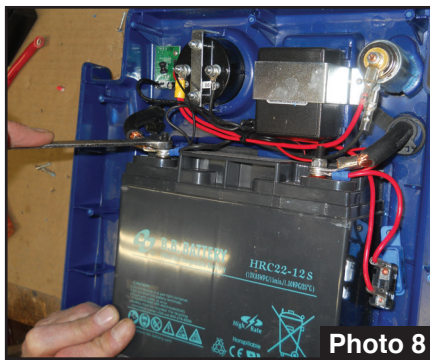


Photo 8

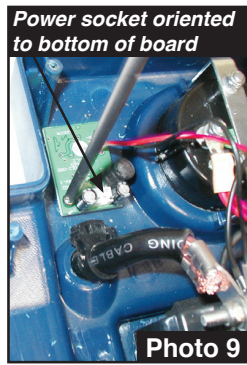


Photo 9

9. Mount new Charge Control Board, using screws removed earlier. Orientation is important to ensure proper Battery Charge Status indications – white power socket should be on the bottom of the board (see Photo 9).

10. At this point, install the new AC Adaptor into the Case, taking note as to which Case Style you have. Note Step #1, and Photo 3. If you have the round AC Adaptor Hole, as shown in Photo 10, orient the Charger in the Hole, with the leads protruding out the lower right side, and install the Charger Retainer Bracket, which came with the Kit, as shown in Photo 11.

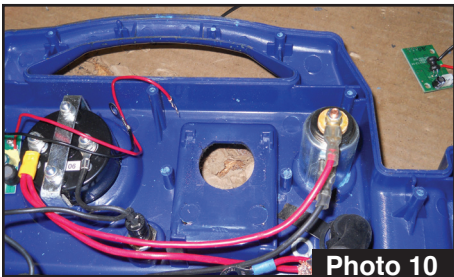


Photo 10

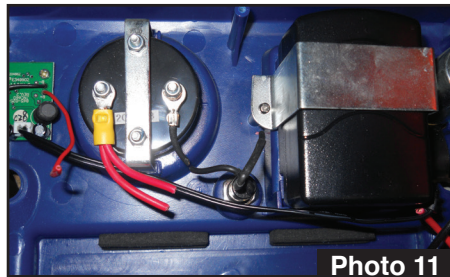


Photo 11

11. At this point, install the new AC Adaptor into the Case, taking note as to which Case Style you have. Note Step #1, and Photo 3. If you have the rectangle AC Adaptor Hole, as shown in Photo 12, orient the Charger in the Hole, with the leads protruding out the upper left side, and install the Charger Retainer Bracket, which came with the Kit, as shown in Photo 13.

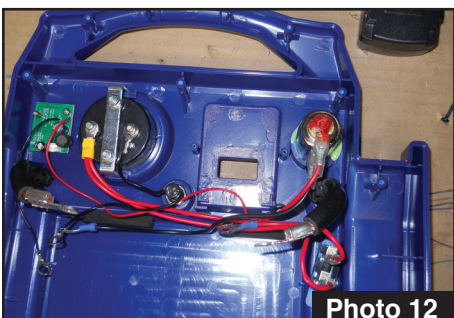


Photo 12



Photo 13

12. Insert 2-pin Power Lead from new Charger/Transformer into Power Socket on the Charge Control Board (see Photo 9).

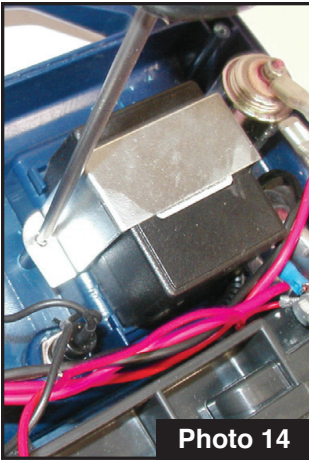


Photo 14

13. At this point, unit internals should look like Photos 11 or 13. Set unit upright, with the Case Back still uninstalled. Plug extension cord into outlet on front of unit to confirm charging function via LED activation (see Photo 14). Also, press red button to confirm gauge function. Hook clamps to voltmeter to check battery voltage level.

14. After completing function testing, reinstall Case Back, using screws removed earlier.

15. Inspect LED Charge Status Label on front of unit. If label is new style (flush mounted) and in good condition, repair is complete. If label is old style (holes for LEDs) or in poor condition, proceed to Step 16.

16. Remove old Charge Status Label with knife or scraper and clean area of any loose foreign matter (see Photo 13). Install new Charge Status Label. The repair is complete.



Photo 15



Complete

